

Low power Q8 series

Low power •
Ø8 mm panel mount LED indicators



DISTINCTIVE FEATURES

- 5 mm colored diffused epoxy lens
- Prominent and flush bezel styles
- Wire terminations 200 mm



ENVIRONMENTAL SPECIFICATIONS

- IP67 sealing option (EN60529)
- Operating & Storage Temperature Range:
Rear epoxy body: -40 °C to +85 °C (-40 °F to +185 °F)



GENERAL SPECIFICATIONS

- Max Reverse Voltage: 5 V
- Viewing Angle: 30–100° (dependant on model)
- Life Expectancy: 100,000 hours
- Torque: 20 to 25 cNm
- Maximum panel thickness 7 mm
- Insulation resistance : 4,000 MΩ at 500 VDC

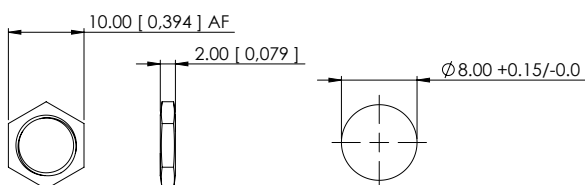


MATERIALS

- Natural anodized bezels
- Black anodized bezels



MOUNTING



The company reserves the right to change specifications without notice.

All LED characteristics are dependent upon environmental conditions. Therefore published data should be considered nominal and subject to variations.



Low power Q8 series

Low power • Ø8 mm panel mount LED indicators



ELECTRICAL SPECIFICATIONS

LED COMPONENT SPECIFICATIONS

	Prominent	Flush	Operating current
Red	190 mcd	20 mcd	2 mA
Green	450 mcd	50 mcd	2 mA
Yellow	200 mcd	20 mcd	2 mA
Blue	180 mcd	15 mcd	2 mA

Voltage	Operating Voltage	Operating Current
	(Typical All Types)	(Typical All Types)
03 VDC	3.0 to 3.6 VDC	2 mA
12 VDC	10.8 to 13.2 VDC	2 mA
24 VDC	21.6 to 26.4 VDC	2 mA
28 VDC	25.2 to 30.8 VDC	2 mA

- The operating voltage must not be exceeded by more than 10% as this will result in reduced life expectancy
- Luminous intensity is measured at 2 mA on a discrete led unless otherwise stated.
- Luminous intensities and color of LEDs may vary within a batch.
- Luminous intensity will be reduced with lower operating current.
- Recommended usage: Homogenous light output that is good for indoor and outdoor applications.

Our regulatory declarations & certifications

In accordance with its QHSE policy and its values, the APEM group applies the most demanding environmental regulations.

- UL Recognition

- REACH & ROHS

- Parc tested

- IP67

- LVD (BS EN 60838 :2017+A11 :2021)*

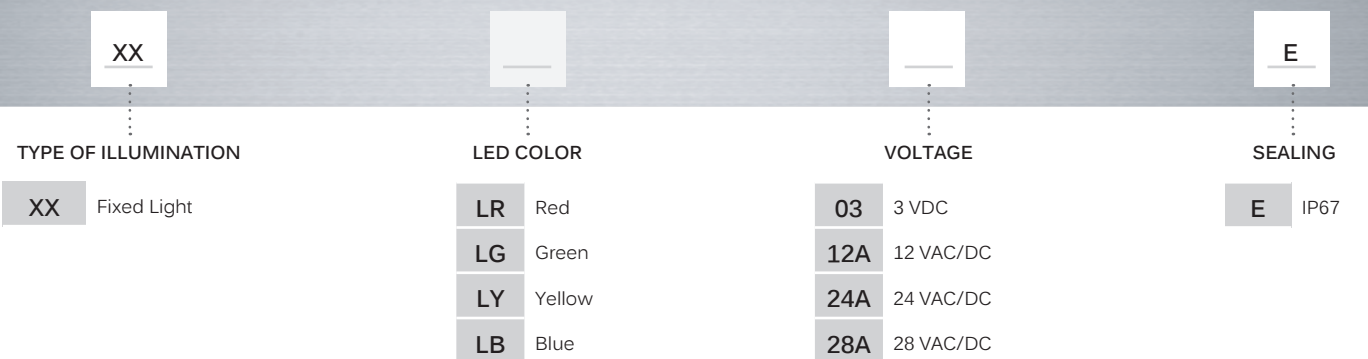
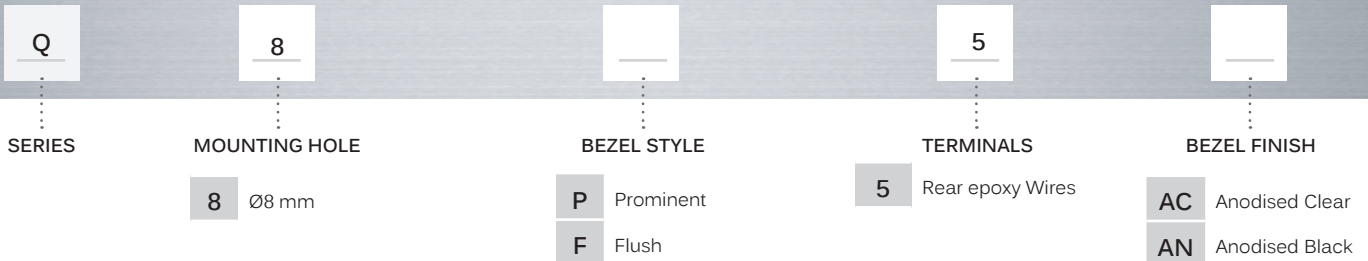
*Awareness to possible high level of moisture conditions

Low power Q8 series

Low power • Ø8 mm panel mount LED indicators



BUILD YOUR PART NUMBER



ABOUT THIS SERIES

- ⚠ **Notice:** please note that not all combinations of above numbers are available.
- Standard and Bi-Colour are provided in Standard wire length is 200mm, 24AWG UL1061, Red wire denotes anode (+), Black wire denotes cathode (-) for other lengths consult APEM.

Low power Q8 series

Ø8 mm panel mount LED indicators

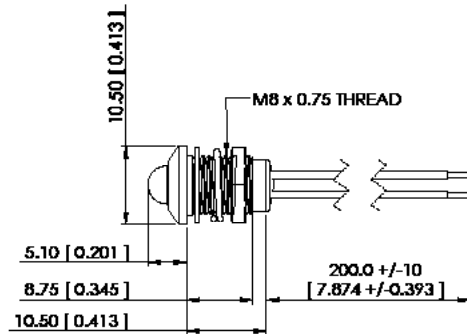
PROMINENT BEZEL



FLUSH BEZEL



REAR EPOXY WIRES



REAR EPOXY WIRES

