

A01 series

Industrial controls • Ø16mm panel mounting pushbutton switches and indicators



DISTINCTIVE FEATURES

- Single pole to four pole changeover
- Custom engraving or film legends options
- 6A 250VAC



ENVIRONMENTAL SPECIFICATIONS

- Operating Temperature : -20°C to +55°C
- Solder Heat Resistance : 350°C for 5 seconds
- Sealing : Panel sealed to IP65, rear of panel IP40



ELECTRICAL SPECIFICATIONS

- Current/Voltage Rating : 10mA 5VAC min, 6A 250VAC max, 6A 12VDC max
- Initial Contact Resistance : 10mΩ max at 1A 4VDC
- Insulation Resistance : 50MΩ min
- Dielectric Strength : 750V between open contacts, 5KV live to accessible
- Electrical Life : 50.000 cycles min
- Insulation : Class 2
- Lamp Life : LED : 60.000 hours to 75% relative luminosity, Filament : approx. 5000 hours, Neon : approx. 10.000 hours



GENERAL SPECIFICATIONS

- Contact Gap : >1mm (0.039)
- Mechanical Life : Momentary 1 million cycles, Maintained 100.000 cycles
- Terminals : Solder/quick connect 2,8mm (0.110)

AGENCY APPROVALS

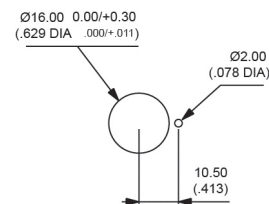
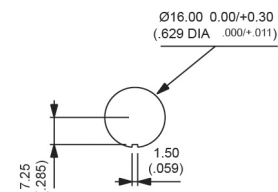


EN 61058-1

The company reserves the right to change specifications without notice.



PANEL CUT-OUT



MATERIALS

- Screen : PC
- Reflector : PC
- Operator : PBT
- Nut : ABS
- Camtrack Momentary : PPE
- Camtrack Maintained : PPSU
- Switch Block 1 & 2 Pole : PBT
- Switch Block 3 & 4 Pole : PEI
- Contacts : Gold plated silver

A01 series

Industrial controls • Ø16mm panel mounting pushbutton switches and indicators

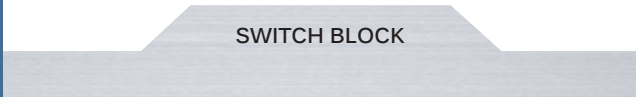
BUILD YOUR PART NUMBER

A pushbutton assembly requires : screen + lamp (if illuminated) + operator + switch block.
To order these elements, select desired model numbers from tables below. Example : IP65 rectangular pushbutton, single pole, maintained, red screen and 12V red LED = A0161B, A0142M1, A0101X and A0151B.



BEZEL	COLOR	PART NO	DESCRIPTION	PART NO	POLE	BEZEL	DESCRIPTION	PART NO
□	black	A0161A	6V, red	A0142L1SP	1 or 2	□	Illum, momentary	A0101Y
□	red	A0161B	6V, green	A0142L2SP	1 or 2	□	Illum, maintained	A0101X
□	amber	A0161C	6V, amber	A0142L3SP	1 or 2	□	Non-illum, momentary	A0102Y
□	yellow	A0161D	12V, red	A0142M1SP	1 or 2	□	Non-illum, maintained	A0102X
□	green	A0161E	12V, green	A0142M2SP	3 or 4	□	Illum, momentary	A0103Y
□	blue	A0161F	12V, amber	A0142M3SP	3 or 4	□	Illum, maintained	A0103X
□	clear	A0161G	24V, red	A0142N1SP	3 or 4	□	Non-illum, momentary	A0104Y
□	white	A0161J	24V, green	A0142N2SP	3 or 4	□	Non-illum, maintained	A0104X
□	black	A0162A	24V, amber	A0142N3SP	1 or 2	□	Illum, momentary	A0105Y
□	red	A0162B	48V, red	A0142P1SP	1 or 2	□	Illum, maintained	A0105X
□	amber	A0162C	48V, green	A0142P2SP	1 or 2	□	Non-illum, momentary	A0106Y
□	yellow	A0162D	48V, amber	A0142P3SP	1 or 2	□	Non-illum, maintained	A0106X
□	green	A0162E			3 or 4	□	Illum, momentary	A0107Y
□	blue	A0162F			3 or 4	□	Illum, maintained	A0107X
□	clear	A0162G			3 or 4	□	Non-illum, momentary	A0108Y
□	white	A0162J			3 or 4	□	Non-illum, maintained	A0108X
○	black	A0163A			1 or 2	○	Illum, momentary	A0109Y
○	red	A0163B			1 or 2	○	Illum, maintained	A0109X
○	amber	A0163C			1 or 2	○	Non-illum, momentary	A0110Y
○	yellow	A0163D			1 or 2	○	Non-illum, maintained	A0110X
○	green	A0163E			3 or 4	○	Illum, momentary	A0111Y
○	blue	A0163F			3 or 4	○	Illum, maintained	A0111X
○	clear	A0163G			3 or 4	○	Non-illum, momentary	A0112Y
○	white	A0163J			3 or 4	○	Non-illum, maintained	A0112X

Bezel: □ rectangular, □ square, ○ round. 'illum'-illuminated, 'Non-illum'-non illuminated



NO OF POLES	PART NO
Single pole	A0151B
Double pole	A0152B
Three pole	A0155B
Four pole	A0153B

RED ILLUMINATED MAINTAINED PUSHBUTTON WITH ROUND BEZEL DOUBLE POLE CHANGEOVER

