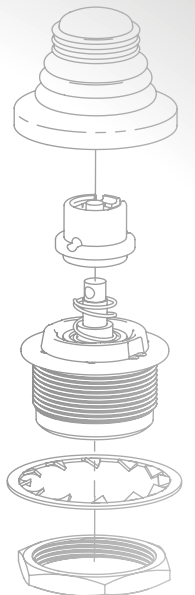
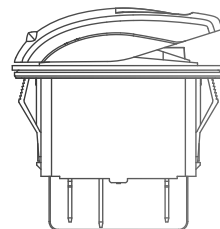
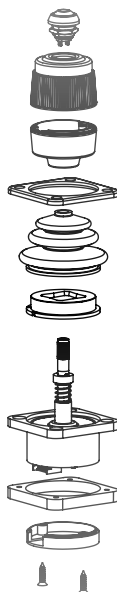
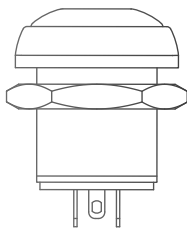
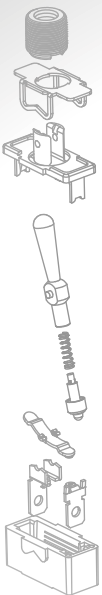


**APEM**



## MATERIAL HANDLING



**A WORLD OF  
SWITCHING CAPABILITIES**



# APEM IN MATERIAL HANDLING

APEM is a leading manufacturer of **high-quality Human Machine Interface (HMI)** products with over **20 years' experience** in the material handling market.

APEM is vertically integrated offering uncompromised reliability through its custom product development, manufacturing excellence and outstanding service.

APEM offers a broad range of HMI components designed for the material handling market, including toggles, rockers, pushbutton switches, LED indicators and paddle controls, as well as keyboards and joysticks.

## ROBUST DESIGN

DEDICATED TO  
SUPPORTING YOUR  
CUSTOM DESIGN



## A BROAD RANGE OF PRODUCTS AND SOLUTIONS

### APEM OFFERS

#### ① STANDARD PRODUCTS



#### ② CUSTOMIZED PRODUCTS

APEM offers unique expertise in HMI product customization.

With robust development processes, based on the automotive APQP method, APEM supports custom design specifications for exclusive HMI requirements.



#### ③ SAFETY INTEGRATION POLICY

APEM develops ISO/EN safety compatible products, combining hardware and software solutions which provide customers with integrated HMI products, bringing high levels of safety to their systems. APEM follows the evolution of safety standards in different areas to ensure correct PL (performance level) as well as compatible SIL (safety integration level) of customer applications.

#### ④ CAPABILITY TO ADD ELECTRONICS AND SOFTWARE FUNCTIONS

**PERFORMANCE** - APEM's fully integrated front panel solutions ensure the highest performance to mechanical, electrical, environmental and EMC/EMI standards.

**EFFICIENT INTEGRATION** - APEM can design electronics and connector systems to fit most applications.



**COMMUNICATION PROTOCOLS**  
CANbus (J1939, CANopen),  
RS422, RS485, USB...

**INTEGRATED BOOT LOADER**  
Diagnostic and software  
upgrade capability

**ELECTRONICS AND  
SOFTWARE DESIGN**

**LOW POWER**

**BIT SOFTWARE**  
Real time Built-In-Test

**FILTERING & PROTECTION**  
ESD, EMI, filter and protection  
of network...

**INTEGRATED DIMMING**



# OUR PRODUCTS

APEM OFFERS THE WIDEST RANGE OF HMI COMPONENTS & SOLUTIONS WITH OVER 125,000 STANDARD PART NUMBERS INCLUDING SWITCHES, INDICATORS, JOYSTICKS AND SWITCH PANELS.

## PANEL SWITCHES



**CT SERIES** ..... 6  
SEALED, ROBUST TOGGLE SWITCHES



**12000 SERIES** ..... 7  
DESIGNED TO HIGH PERFORMANCE STANDARDS



**13000 SERIES** ..... 8  
ROBUST FOR DEMANDING APPLICATIONS



**IA SERIES** ..... 9  
LOW PROFILE WITH ELASTOMER MEMBRANE SEAL



**FD SERIES** ..... 10  
DOUBLE ICON ILLUMINATED PUSHBUTTONS



**IHS/IHL SERIES** ..... 11  
LONG LIFE PUSHBUTTON CONTROL



**KR/KL SERIES** ..... 12  
SEALED CUSTOMIZABLE ROCKER SWITCHES



**SEALING BOOTS** ..... 13  
PROTECT AGAINST DUST, SAND AND WATER



**ES SERIES** ..... 14  
DESIGNED FOR EXTREME CONDITIONS



**A02ES-I/A02ES-H SERIES** ..... 15  
ERGONOMIC EMERGENCY STOP SWITCHES

## INDICATORS



**Q SERIES** ..... 16/17  
LARGE VARIETY OF INDICATORS

## PCB SWITCHES



**MULTIMEC 3 & 5 SERIES** ..... 18  
ABSOLUTE RELIABILITY AND FUNCTIONALITY

## JOYSTICKS



**FR SERIES** ..... 19  
LONG LIFE HALL EFFECT F-N-R CONTROL



**TS SERIES** ..... 20  
MINIATURE JOYSTICK FOR INDUSTRIAL APPLICATIONS



**HR SERIES** ..... 21  
UNIQUE THUMB CONTROL MECHANISM



**PC SERIES** ..... 22  
PROPORTIONAL ERGONOMIC HANDHELD DEVICE



**BD/BF SERIES** ..... 23  
LOW POWER CONSUMPTION CUSTOMIZABLE SINGLE AXIS PADDLES



**1000 SERIES** ..... 24  
COST EFFECTIVE SWITCHING JOYSTICKS



**HF SERIES** ..... 25  
ENVIRONMENTALLY SEALED, FINGER OPERATED



**3000 SERIES** ..... 26  
ROBUST, FINGERTIP OPERATED CUSTOM HANDLES



**MS SERIES** ..... 27  
ERGONOMIC PALM GRIP CONTROLLERS



**CJ SERIES** ..... 28  
COMFORTABLE HAND GRIP CONTROL

## SWITCH PANELS



**CUSTOMIZABLE  
PANEL OPTION** ..... 29  
COMPACT SIZES FOR OPTIMUM EFFICIENCY



**ELECTRONICS &  
SOFTWARE** ..... 30  
ON DEMAND ELECTRONICS AND SOFTWARE INTEGRATION



**CUSTOM CAPABILITIES** ..... 31  
CUSTOM PRODUCTS DEVELOPED EXCLUSIVELY FOR UNIQUE CUSTOMERS AND APPLICATIONS

# CT SERIES

## SEALED TOGGLE SWITCH



## SEALED, ROBUST TOGGLE SWITCHES

- Completely sealed switching chamber
- Three types of terminals
- UL approved
- Large volume toggle

SERIES	APPROVALS	POLES	MAXIMUM RATINGS	BUSHING DIMENSIONS	TERMINAL OPTIONS			MOUNTING OPTIONS	SEALING
					Solder lugs	Quick-connect	Screw		
CT	UL	1, 2	15A 28VDC	11.9 mm dia. (15/32 in)	X	X	X	Panel	IP67

TOP APPLICATIONS: TAIL LIFTS, CRANES, WIRELESS REMOTES, LIFT PLATFORMS, SCISSOR LIFTS





# 12000 SERIES

PROFESSIONAL GRADE TOGGLE SWITCH



DESIGNED TO HIGH  
PERFORMANCE  
STANDARDS

- Robust for high specification environments
- Completely sealed construction
- 1, 2 & 3 locking lever positions

SERIES	APPROVALS	POLES	MAXIMUM RATINGS	BUSHING DIMENSIONS	TERMINAL OPTIONS			MOUNTING OPTIONS	SEALING
					Solder lugs	Quick-connect	Screw		
12000	CECC/MIL	2, 3, 4	4A 30VDC	11.92 mm dia. (15/32 in)	X	X	X	Panel, PCB, Through-hole	IP67

TOP APPLICATIONS: CRANES, WIRELESS REMOTES



# 13000 SERIES

UNIQUE PUSH/PULL PUSHBUTTON



## ROBUST FOR DEMANDING APPLICATIONS

- Low, behind panel profile
- Anodized actuator, available in multiple colors
- Quick break contacts
- Double shell - sealed construction

SERIES	POLES	MAXIMUM RATINGS	BUSHING DIMENSIONS	TERMINAL OPTIONS			MOUNTING OPTIONS	SEALING
				Solder lugs	Quick-connect	Screw		
13000	2, 3	4A 28VDC 10A 24VDC	15 mm dia. (.590 in)	x			Panel	IP67

TOP APPLICATIONS: WIRELESS REMOTE CONTROLS, HAND-HELD CRANE CONTROLS





# IA SERIES

## LOW PROFILE SEALED PUSHBUTTON



## LOW PROFILE WITH ELASTOMER MEMBRANE SEAL

- Resistant to frost, sand & hydrocarbons
- Tactile feedback
- Front panel sealed up to IP67
- Low profile, soft membrane actuator

SERIES	POLES	MAXIMUM RATINGS	BUSHING DIMENSIONS	TERMINAL OPTIONS	MOUNTING OPTIONS	SEALING
				Flying leads		
IA	1	2A 24VDC	16.0 mm dia. (.629 in)	X	Panel	IP67

**TOP APPLICATIONS:** HANDLE CONTROLS, CRANES, WIRELESS REMOTE CONTROLS, SCISSOR LIFTS



# FD SERIES

## DOUBLE ICON ILLUMINATED PUSHBUTTON



## DOUBLE ICON ILLUMINATED PUSHBUTTONS

- 3 standard legends (0/1, START/STOP, ON/OFF)
- Sealed up to IP69K
- Threaded or snap-in versions

SERIES	POLES	MAXIMUM RATINGS	BUSHING DIMENSIONS	TERMINAL OPTIONS			MOUNTING OPTIONS	SEALING	ILLUMINATION
				Solder lugs	Quick-connect	Screw			
FD	1, 2	4A 12VDC 200mA 12VDC	Ø24 (.944) Ø26 (1.024)	x			Panel, Snap-in or threaded bushing	IP69K (threaded bushing)	x

TOP APPLICATIONS: CRANES, BOOM LIFTS, FORK TRUCKS





# IHS & IHL SERIES

## HALL EFFECT PUSHBUTTON



## LONG LIFE PUSHBUTTON CONTROL

- Proportional control
- Five million lifecycles
- Sealed to IP67
- Low and high actuators

SERIES	MAXIMUM RATINGS	BUSHING DIMENSIONS	TERMINAL OPTIONS		MOUNTING OPTIONS	SEALING
			Flying leads	Solder lugs		
IHS IHL	5mA 24VDC 1,25mA 4,5VDC	Ø12 (.472)	X		Panel	IP67

TOP APPLICATIONS: REMOTE CONTROLS, PALLET JACKS, FORKLIFTS, CRANE CONTROLS, SCISSOR LIFTS



# KR/KL SERIES

## ILLUMINATED ROCKER SWITCH



## SEALED CUSTOMIZABLE ROCKER SWITCHES

- Laser etched legends
- Illuminated or non-illuminated
- Large selection of colors & symbols
- Large variety of terminal options
- Patented intuitive design (KL)

SERIES	POLES	MAXIMUM RATINGS	BUSHING DIMENSIONS	TERMINAL OPTIONS			MOUNTING OPTIONS	SEALING	ILLUMINATION
				Solder lugs	Quick-connect	Screw			
KR	1, 2	10A 24VDC	36.8 x 21.09	X	X	X	Panel	IP68	X
KL	1, 2	10A 24VDC	36.8 x 21.08	X	X	X	Panel	IP68	X

TOP APPLICATIONS: CRANES, SCISSOR LIFTS, BOOM LIFTS, FORK TRUCKS





# SEALING BOOTS

## TOGGLE & PUSHBUTTON BOOTS



PROTECT  
AGAINST DUST,  
SAND & WATER

- Available for toggle and pushbutton switches
- Wide variety of colors, shapes & sizes
- Available in silicone and neoprene

SERIES	BOOT MATERIAL	NUT MATERIAL	OPERATING TEMPERATURE	TEMPERATURE RANGE		ELASTICITY	MECHANICAL RESISTANCE
				LOW	HIGH		
Boots	Neoprene or silicone	Brass, nickel plated, matte black	SILICONE	-40°C to +85°C	Best	Best	Good
			NEOPRENE	-20°C to +50°C	Good	Better	Best

TOP APPLICATIONS: ALL OUTDOOR OR HARSH ENVIRONMENTS



# ES SERIES

HEAVY DUTY METAL EMERGENCY STOP



DESIGNED  
FOR EXTREME  
CONDITIONS

- Anodized metal actuator
- Impact resistant to IK10
- Sealed to IP65, IP67 & IP69K
- Locked / unlocked status indicator

SERIES	POLES	MAXIMUM RATINGS	BUSHING DIMENSIONS	TERMINAL OPTIONS		MOUNTING OPTIONS	SEALING
				Solder lugs	PCB		
ES	2, 3	1A 24VDC	Ø22,28 (.877)	X	X	Panel	IP65, IP67 & IP69K

TOP APPLICATIONS: CRANES, SCISSOR LIFTS, BOOM LIFTS, FORK TRUCKS





# A02ES-I/A02ES-H SERIES

## EMERGENCY STOP SWITCH



## ERGONOMIC EMERGENCY STOP SWITCHES

- Optional independent backlighting of operator
- Safe and easy to operate, easy to mount
- Exclusive built-in-safety design (A02ES-H)
- Approved to EN60947-5-5, EN60547-5-1, UL 508 and CSA

SERIES	APPROVALS	POLES	MAXIMUM RATINGS	BUSHING DIMENSIONS	TERMINAL OPTIONS	MOUNTING OPTIONS	SEALING	ILLUMINATION
					Connector			
A02ES-I	EN 60947-5-5, UL 508, CSA	1, 2	8A 24VDC	22,5 (0,885)	x	Panel	IP65	x
A02ES-H	EN 60947-5-5, UL 508, CSA	2	3A 240VAC 2A 30VDC	22,5 (0,885)	x	Panel	IP65	Optional

**TOP APPLICATIONS: CRANES, SCISSOR LIFTS, BOOM LIFTS, FORK TRUCKS, REMOTE CONTROLS**



# Q SERIES STANDARD

PROFESSIONAL GRADE LED INDICATORS



## LARGE VARIETY OF LED INDICATORS

- Available in seven panel cut-out sizes
- Chrome, black, satin and anodized bezel finishes
- Wide variety of LED colors including hyper bright (diffused) and super bright (water clear)
- Customizable engraving and illumination

SERIES	PANEL CUT-OUT	MAXIMUM RATING	BEZEL STYLE	BEZEL FINISH	TERMINAL OPTIONS				TYPE OF ILLUMINATION	LED COLORS
					Solder lugs	Faston	Pins	Wires		
Q	Ø6, 8, 12, 14, 16, 19, 22	2VDC -220VAC	Prominent, Recessed & Flushed	Bright, Satin & Black Chrome	X	X	X	X	Fixed light, flashing bi-color, tri-color, night vision	5 standard colors, 5 superbright colors, 4 hyperbright colors

TOP APPLICATIONS: ANY PANEL MOUNT CONFIGURATION





# Q SERIES CUSTOM

PROFESSIONAL CUSTOM LED INDICATORS



## CUSTOMIZED TO YOUR REQUIREMENTS

- Custom engraving and reverse engraving
- Secret until lit polycarbonate decals
- Customer specified wire and connector assemblies
- Specific custom voltage ranges
- Suitable for mimic panel assembly

SERIES	PANEL CUT-OUT	MAXIMUM RATING	BEZEL STYLE	BEZEL FINISH	TERMINAL OPTIONS				TYPE OF ILLUMINATION	LED COLORS
					Solder lugs	Faston	Pins	Wires		
Q	Ø6, 8, 12, 14, 16, 19, 22	2VDC -220VAC	Prominent, Recessed & Flushed	Bright, Satin & Black Chrome	X	X	X	X	Fixed light, flashing bi-color, tri-color, night vision	5 standard colors, 5 superbright colors , 4 hyperbright colors

TOP APPLICATIONS: ANY PANEL MOUNT CONFIGURATION



# MULTIMEC 3 & 5 SERIES

HIGH PERFORMANCE PCB SWITCHES



ABSOLUTE  
RELIABILITY AND  
FUNCTIONALITY

- Wide range of standard keycaps
- Switch and keycap options designed for using under an overlay
- Superior sealing
- Superior illumination with integrated chip-LEDs

SERIES	POLES	Function	MAXIMUM RATING	MOUNTING OPTIONS	SEALING	MECHANICAL LIFE
Multimec 3 & 5 series	Single pole / momentary	NO & NC/NO	50mA - 24VDC	Through hole or SMT mounting	IP67	10 million

TOP APPLICATIONS: CONTROLLERS FOR FORKLIFTS & CRANES



# FR SERIES

THREE POSITION THUMB CONTROL



LONG LIFE  
HALL EFFECT  
F-N-R CONTROL

- Three position thumb control
- Forward/neutral/reverse function
- Several handles options
- Submersible to 1m (3.28ft) per IP68
- Drop-in or rear mounting

SERIES	MECHANICAL LIFECYCLES	AXIS	TECHNOLOGY Hall effect	MOUNTING OPTIONS	SEALING
FR	3 million	1	x	Drop-in or rear mounting	IP68

TOP APPLICATIONS: FORK TRUCKS, CARGO LOADERS





# TS SERIES

## PROPORTIONAL THUMBSTICK



## MINIATURE JOYSTICK FOR INDUSTRIAL APPLICATIONS

- Metal bushing & pushbutton options
- One or two axis
- Large variety of handle options
- Submersible to 1m (3.28ft) per IP68

SERIES	MECHANICAL LIFECYCLES	AXIS	TECHNOLOGY	OUTPUT OPTIONS						MOUNTING OPTIONS	SEALING
				Single	Dual	Analog	PWM	USB	CANbus		
TS	1 million	1, 2	Hall effect			x		x		Drop-in or rear mounting	IP68

TOP APPLICATIONS: REMOTE CONTROLS, CRANES, SCISSOR LIFTS, BOOM LIFTS



# HR SERIES

## PROPORTIONAL THUMBWHEEL



## UNIQUE THUMB CONTROL MECHANISM

- Backlighting & detent options available
- Self centering spring return mechanism
- Non-contacting Hall effect technology
- Patented friction-hold version

SERIES	MECHANICAL LIFECYCLES	AXIS	TECHNOLOGY	OUTPUT OPTIONS			MOUNTING OPTIONS	SEALING
				Single	Dual	Analog		
HR	5 million	1	Hall effect	X	X	X	Rear mounting	IP68

TOP APPLICATIONS: REMOTE CONTROLS, CRANES, SCISSOR LIFTS, BOOM LIFTS





# PC SERIES

## HANDHELD PENDANT CONTROLLER



## PROPORTIONAL ERGONOMIC HANDHELD DEVICE

- USB and analog output
- Lightweight, one hand design
- Easily configured with APEM components
- Custom configured to order

SERIES	MECHANICAL LIFECYCLES	AXIS	TECHNOLOGY	OUTPUT OPTION						MOUNTING OPTIONS	SEALING
				Single	Dual	Analog	PWM	USB	CANbus		
PC						X		X			VARIES, DEPENDENT ON CONFIGURATION

TOP APPLICATIONS: SCISSOR LIFTS, REMOTE CONTROLS, BOOM LIFTS, TRUCK TAIL LIFTS





# BD/BF SERIES

## HALL EFFECT JOYSTICK PADDLES



LOW POWER  
CONSUMPTION  
CUSTOMIZABLE  
SINGLE AXIS PADDLES

- Analog and digital functions including PWM output
- Different actuator styles available
- Several interchangeable color insert options
- Minimal below panel depth with stackable mounting

SERIES	MECHANICAL LIFECYCLES	AXIS	TECHNOLOGY	OUTPUT OPTIONS				MOUNTING OPTIONS	SEALING
				Single	PWM	DUAL	CANbus		
BF	5 million	1	Hall effect		x	x		Drop-in	IP67
BD	5 million	1	Hall effect		x	x		Drop-in	IP67

TOP APPLICATIONS: WIRELESS REMOTE CONTROLS, CRANES, TELEHANDLERS



# 1000 SERIES

## COMPACT SWITCHING JOYSTICK



## COST EFFECTIVE SWITCHING JOYSTICKS

- Compact size with V3 or V4 switches
- Single or dual axis
- Single or double pole
- Bushing or screw mount available
- Additional switch joysticks available
- Wide selection of handles

SERIES	MECHANICAL LIFECYCLES	AXIS	TECHNOLOGY	SWITCHING POINTS (degrees)				MOUNTING OPTIONS	SEALING
				Analog	PWM	USB	CANbus		
1000	5 million	1,2	Switching (1,2 poles)	x				22mm bushing, 4 point screw	Up to IP67

**TOP APPLICATIONS: TRUCK TAIL LIFTS, PALLET JACKS, LIFT ACCESSORIES**



# HF SERIES

MULTI-AXIS HALL EFFECT JOYSTICK



ENVIRONMENTALLY  
SEALED, FINGER  
OPERATED

- Hall effect technology
- Connectorized housing
- Ten handle options
- Up to 3 axis of control

SERIES	MECHANICAL LIFECYCLES	AXIS	TECHNOLOGY	OUTPUT OPTIONS		MOUNTING OPTIONS	SEALING
				Analog	USB		
HF	5 million	1, 2, 3	Hall effect	X	x	Drop-in or Rear mounting	IP67

TOP APPLICATIONS: WIRELESS REMOTE CONTROLS





# 3000 SERIES

LOW PROFILE HALL EFFECT JOYSTICK



ROBUST  
FINGERTIP  
OPERATED  
CUSTOM HANDLES

- Minimal install depth of <20mm
- One, two or three axis with optional pushbuttons
- Rated for 10 million lifecycles
- Analog or PWM outputs
- Panel sealed to IP65

SERIES	MECHANICAL LIFECYCLES	AXIS	TECHNOLOGY	OUTPUT OPTIONS				MOUNTING OPTIONS	SEALING
				Analog	Single	Dual	PWM		
3000	10 million	1, 2, 3	Hall effect	x	x	x	x	Drop-in or Rear mounting	IP65, IP67

TOP APPLICATIONS: WIRELESS REMOTE CONTROLS, PALLET JACKS, BUCKET TRUCKS



# MS SERIES

## MID-SIZE HALL EFFECT JOYSTICK



## ERGONOMIC PALM GRIP CONTROLLERS

- Ergonomic, 3 axis palm grip control
- Low profile, compact size
- Available with CANbus J1939 or CANopen

SERIES	MECHANICAL LIFECYCLES	AXIS	TECHNOLOGY	OUTPUT OPTIONS			MOUNTING OPTIONS	SEALING
				Analog	USB	CANbus		
MS	10 million	1, 2, 3	Hall effect	x	x	x	Drop-in or Rear mounting	IP67

TOP APPLICATIONS: BUCKET TRUCKS, SCISSOR LIFTS, BOOM LIFTS



# CJ SERIES

VERSATILE, MULTIFUNCTION JOYSTICK



## COMFORTABLE HAND GRIP CONTROL

- Hall effect technology
- Ergonomic and versatile design
- Redundant output available
- Available with CANbus, J1939, CANopen and USB outputs

SERIES	MECHANICAL LIFECYCLES	AXIS	TECHNOLOGY	OUTPUT OPTIONS			MOUNTING OPTIONS	SEALING
				Analog	USB	CANbus		
CJ	10 million	1, 2	Hall effect	X	X	X		IP67

TOP APPLICATIONS: CRANES, TELEHANDLERS, SCISSOR LIFTS, BOOM LIFTS





# SWITCH PANELS

## CUSTOMIZABLE PANEL OPTIONS



## COMPACT SIZES FOR OPTIMUM EFFICIENCY

- Quick front assembly
- Market standard panel cut-out (six button version)
- Integration of communication protocol such as CAN & LIN
- Indicators, bargraph integration



### ELASTOMER KEYPADS

- Complete APEM joystick integration
- High density keyboard
- Quality tactile feel
- Sealed up to IP67
- Backlit
- CAN or wire output

### ENHANCED MEMBRANE KEYPADS

- Cable output
- Slim design
- Sealed up to IP67
- Impact resistant to IK10
- High performance at a low cost

### BUTTON BOXES

- IP68 sealed buttons
- Standard 22mm dia. long course interface
- Less than 22mm below panel
- CAN, USB or RS output
- ISO 13849 compatible
- Shock protection option available

## TOP APPLICATIONS: BUCKET TRUCKS, SCISSOR LIFTS, BOOM LIFTS



# ELECTRONICS & SOFTWARE

CUSTOMIZABLE INTEGRATION



## ON DEMAND ELECTRONICS & SOFTWARE INTEGRATION

- Communication protocols: CANbus, RS485/422, USB...
- Integration possible with all APEM products and solutions

### MATERIAL HANDLING

Communication protocols: CANbus (J1939, CANopen), RS485, RS422, USB...

Low power management

BIT Software: real time Built In Test

Integrated Dimming

Integrated Boot Loader: Diagnostic and software upgrade capability

TOP APPLICATIONS: ALL MATERIAL HANDLING MACHINERY



# CUSTOM CAPABILITIES

APEM  
FULLY CUSTOM

## CUSTOMER EXCLUSIVE CUSTOM PRODUCTS CO-DEVELOPED WITH CUSTOMERS

★  
PRECISE AND  
VISUALLY APPEALING  
DIGITAL PRINTING

★  
INTEGRATION OF CAN  
COMMUNICATION  
PROTOCOL

★  
ROBUST CONTACTS AND  
RESISTANT MATERIALS FOR  
LONG LIFE EXPECTANCY

APEM EXCLUSIVE

APEM offers a large range of more than 125 000 part numbers consisting of switches, indicators, joysticks and keypads in different colors, markings, finishes, shapes and dimensions... creating an unlimited combination of possibilities.

### APEM develops complete interface solutions

combining components (switches, keypads, indicators, joysticks), standard electronic boards and programming.

An APEM team professional is happy to assist you in the development of these complete turnkey solutions meeting your specific requirements, with responsiveness and flexibility.



## WORLDWIDE SALES & CUSTOMER SUPPORT

### AMERICAS



#### USA

63 Neck Road  
HAVERHILL, MA 01835  
Tel: (+1) 978 372 1602  
Fax: (+1) 978 372 3534  
info@apem.com

#### USA

970 Park Center Drive  
VISTA, CA 92081  
Tel: (+1) 760 598 2518  
Fax: (+1) 760 598 2524  
info@apem.com

### EMEA



#### BENELUX

Avenue Excelsiorlaan 21  
1930 ZAVENTEM  
Belgium  
Tel B: (+32) 27 25 05 00  
Tel NL: (+31) (70) 799 91 51  
Fax: (+32) 27 25 22 00  
sales@apemswitches.be

#### FRANCE

55, avenue Edouard Herriot  
BP1  
82303 CAUSSADE Cedex  
Tel: (+33) 5 63 93 14 98  
Fax: (+33) 5 63 93 19 03  
commercial@apem.fr

#### GERMANY

Gewerbehof Giesing  
Paulsdorfferstr. 34, 2. OG  
D-81549 MUNICH  
Tel: (+49) 89 45 99 11 0  
Fax: (+49) 89 48 10 39  
info@apem.de

#### ITALY

Via Marconi 147G  
12030 MARENE (CN)  
Tel: (+39) 0172 74 31 70  
Fax: (+39) 0172 74 31 71  
apem.italia@apem.it

#### SWEDEN

Isafjordsgatan 35  
S-16440 KISTA  
Tel: (+46) 8 626 38 00  
Fax: (+46) 8 626 82 49  
info@apem.se

#### UNITED KINGDOM

Drakes Drive  
LONG CRENDON, Bucks HP18 9BA  
England  
Tel: (+44) 1 844 202400  
Fax: (+44) 1 844 202500  
sales@apem.co.uk

#### DENMARK

MEC  
Industriparken 23  
2750 BALLERUP  
Tel: (+45) 44 97 33 66  
Fax: (+45) 44 68 15 14  
danmec@mec.dk

### ASIAPAC



#### CHINA

RongGuang Building, 602A  
11, Changshun Road  
200051 SHANGHAI  
Tel: (+86) 21 6278 8546,  
(+86) 21 6278 6872  
Fax: (+86) 21 6208 8209  
contact@apem.com.cn

**MORE THAN 130 DISTRIBUTORS WORLDWIDE**  
(Complete list available on [www.apem.com](http://www.apem.com))